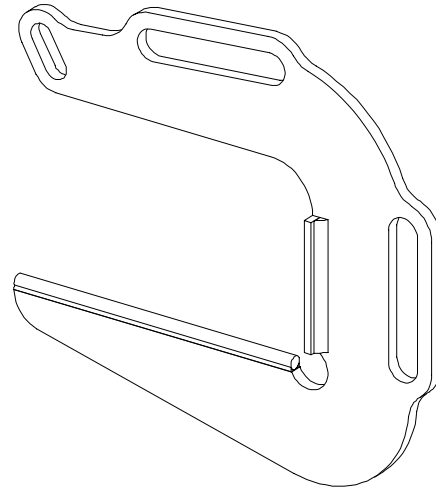


Applications

Lifting of horizontal pipes or tubes made of various materials.



Description

Hooks with a large opening and long bearing surface fitted with handles to make handling easier. Slings not provided.

Functioning

Use in pairs with a 2-legged sling. Position a hook at both ends and perform lifting.

Particular instructions

- Recommended sling angle: 90°.
- Working temperature: -20° to +100°C.

General characteristics

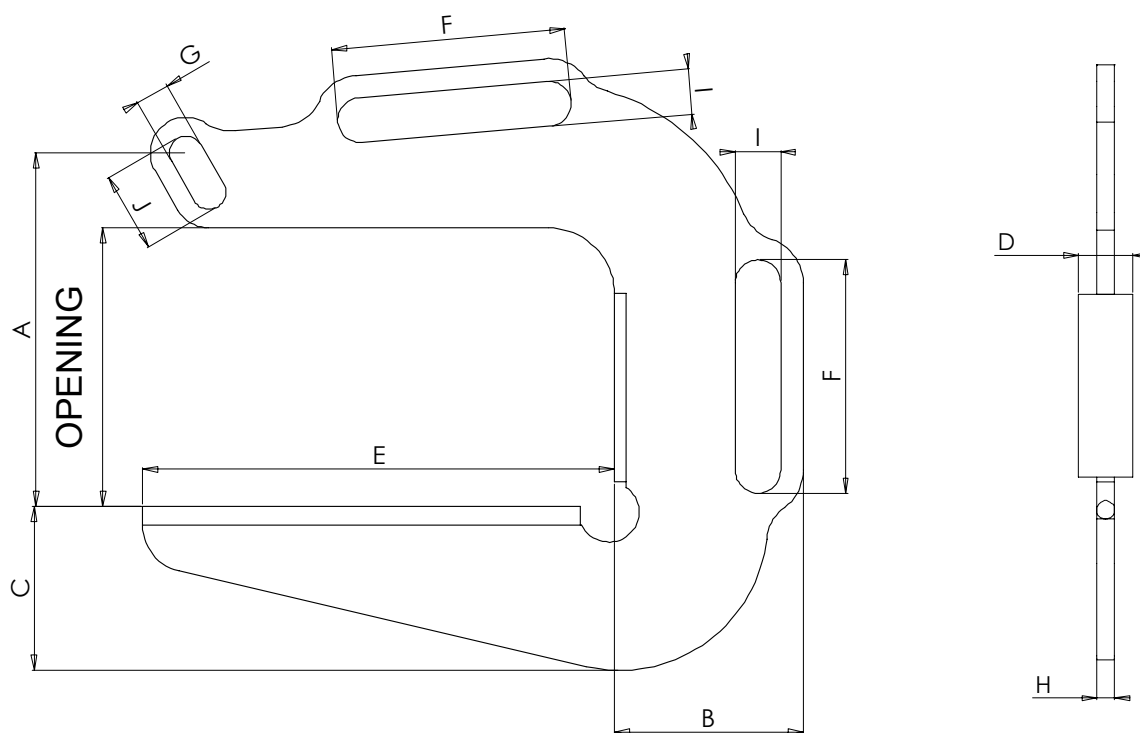
- Manufacture without load bearing welds.
- Hot epoxy coating.
- Safety factor: 4 in accordance with the European Materials Handling Federation (1998 FEM 3rd edition) ; working group A5 and lifting speed 60 m/ mn.

Dimensional characteristics

Ref.	Group code	WLL/ pair kg	Opening	A	B	C	D	E	F	G	H	I	J	Sling angle	Min chain Ø*	Weight/ pair kg
TB1 0-150	50798	1 000	0-150	188	100	87	30	250	124	18	10	24	42	90°	6	8
TB2 0-200	50808	2 000	0-200	257	136	117	50	298	124	26	12	24	58	90°	8	18
TB3 0-250	50818	3 000	0-250	320	160	143	50	350	150	32	15	30	70	90°	10	30

* provide a 2-legged sling grade 80

Dimensions in mm



Options on request

- Polyurethane coating on hooks' upright and bearing surface.
- Hooks with a larger capacity and/ or opening.
- Chain/ cable slings.