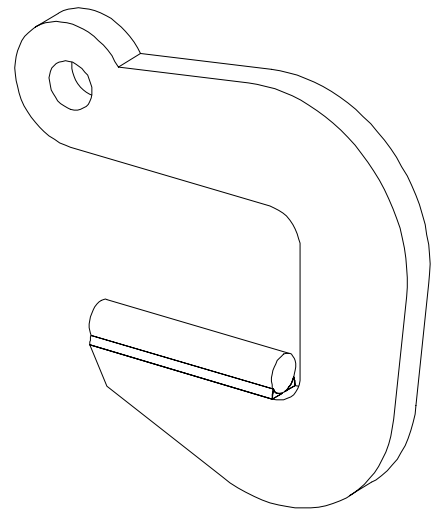
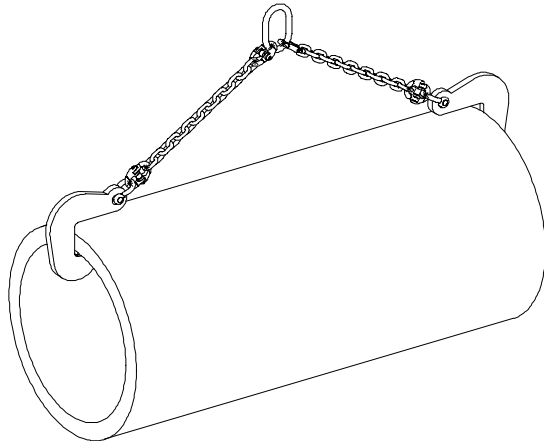


Applications

Lifting of horizontal pipes or tubes made of various materials.



Description

Hooks with a heavy capacity and round bearing surface for a better contact with the load.
Slings not provided.

Functioning

Use in pairs with a 2-legged sling. Position a hook at both ends and perform lifting.

Particular instructions

- Recommended sling angle: 90°.
- Working temperature: -20° to +100°C.

General characteristics

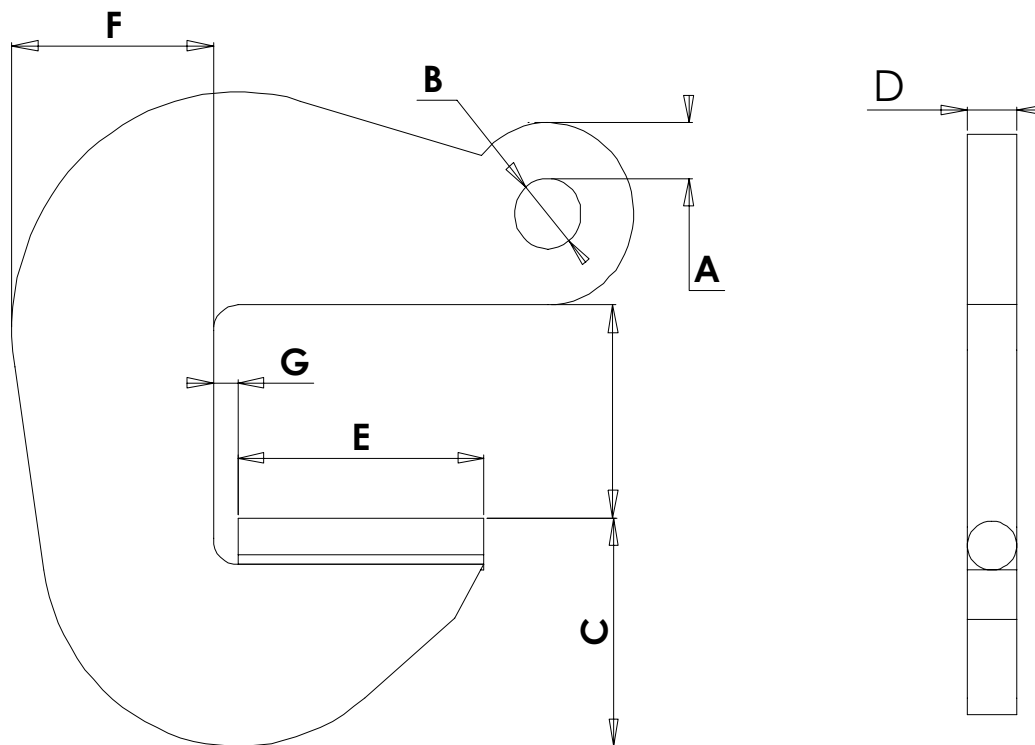
- Manufacture without load bearing welds.
- Hot epoxy coating.
- Safety factor: 4 in accordance with the European Materials Handling Federation (1998 FEM 3rd edition) ; working group A5 and lifting speed 60 m/ mn.

Dimensional characteristics

Ref.	Group code	WLL/ pair kg	Opening	A	B	C	D	E	F	G	Sling angle	Min chain Ø*	Weight/ pair kg
F2 0-60	50118	2 000	0-60	16	20	59	15	85	50	13	90°	8	4
F5 0-75	50128	5 000	0-75	21	27	90	20	100	82	10	90°	13	11
F10 0-100	50138	10 000	0-100	29	36	130	20	120	130	28,5	90°	16	24
F15 0-100	50148	15 000	0-100	34	45	140	30	120	140	28,5	90°	20	40

* provide a 2-legged sling grade 80

Dimensions in mm



Options on request

- Polyurethane coating on hooks' upright and bearing surface.
- Hooks with a larger capacity and/ or opening.
- Chain/ cable slings.