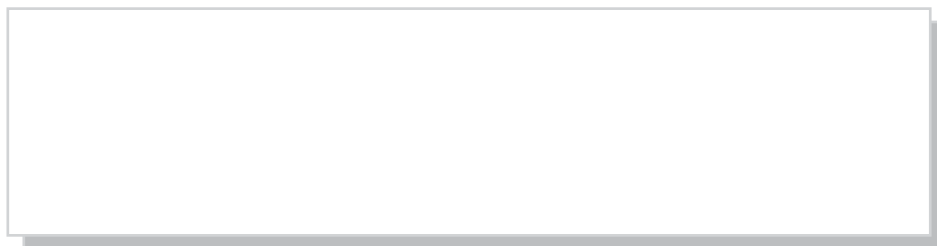


The tractel Group has successfully established itself directly in 15 countries on 4 continents and is active in 80 other countries through its agents, importers and distributors. The main manufacturing plants are in France, Germany and Luxembourg.

Since 30 years, the Tractel Group's strategy is based on the magical triangle :

- **Technical innovation,**
 - **Costs control,**
 - **Worldwide marketing analysis,**
- with the product inside the heart of this triangle.**



TRACTEL S.A.S. :
Saint-Hilaire-sous-Romilly
B.P. 38 - F-10102 Romilly-sur-Seine Cedex
Tél. +33 3 25 21 07 00
Fax. +33 3 25 21 07 11
ISO 9001



www.tractel.com - E-mail : info@tractel.com

Export department :
Tel. (352) 43 42 42-1
Fax (352) 43 42 200

Paris region offices :
Tel. +33 1 48 58 91 32
Fax +33 1 48 58 19 95

jockey®

winch with an unlimited length of rope



HIGH PERFORMANCE

LIGHT WEIGHT

MULTIPURPOSE

SAFE

jockey[®] j3

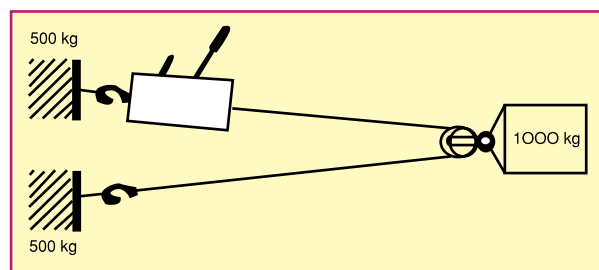
The **JOCKEY** range is an all-purpose lifting and pulling machine.

A safe and robust unit, it is easy to use and maintain and will help on many occasions to perform your pulling, lifting and positioning operations, eq.

APPLICATIONS

Designed for use by professional, industrial and private users, the **JOCKEY** range is particularly useful in the following applications :

- **Prefabricated structures** : installation of columns, lifting of beams, assembly and adjustment of frames and prefabricated structures, etc
- **Steelwork, boilerwork** : lifting, erection, assembly and adjustment of pipes, etc.
- **Transports** : loading and unloading of machines, furnitures, etc., load binding of bulky freight.
- **Factories and workshops** : handling and servicing of machines, etc.
- **Vehicles** : debogging cars, lifting and installing of engines as part of the vehicle's repair kit, etc.
- **Agriculture and forestry** : oading timber, shrub clearance, tightening fences, pulling out stumps, etc.
- **Leisure activities** : launching or beaching small craft, mountaineering or mountain rescue, positioning on debogging caravans, as rally car equipment, etc.



In **jockey 5** version :

The two parts pulley arrangement, anchored to load, **allows double lifting or pulling capacity.**



jockey 3



jockey 5



jockey[®]J5

PRINCIPLE OF THE JOCKEY 3/5

Its principle is simple. The wire rope is pulled straight through the mechanism, using two jaw-blocks which lock onto the wire rope and pull it but without damaging it.

The jaw-blocks are self-clamping: the heavier the load, the firmer the grip.

Moving the operating lever closes the jaw-blocks alternately on the rope. Each jaw-block is designed to take the whole load and the opening of one closes the other, **ensuring complete operating safety.**

As soon as the lever is stopped the force due to the load is **divided automatically** between the two blocks and the load is held perfectly safe.

Change-over from forward to reverse movement is done instantaneously **by simply transferring the operating handle from one lever to the other.**

ADVANTAGES

Light and compact, the JOCKEY range can operate in any direction with an unlimited length of rope.

Used for lifting either **as a winch or hoist** the JOCKEY range continuously **holds the load both when lifting or lowering, with complete accuracy.**

When the equipment is not being used, the rope can be removed and coiled separately, **to facilitate handling and use.** Setting up for operation is completed in only a few minutes.

The **JOCKEY J3/5** is a tool of **high mechanical efficiency**, only withstands the severest conditions of use and only requires **periodic lubrication for maintenance.**

CARACTERISTIQUES

Model	WLL	Weight (kg)	Diameter rope Jockey - 10 m (mm)	Effort on lever at nominal load (kg)	Dimensions L x l x p (mm)
Jockey J3	300 kg	1,750	4,5	±12	320 x 200 x 40
Jockey J5	500 kg	3,750	6,5	20	370 x 215 x 55

* Rope stroke per double way operation of the lever : 25 mm, rope breaking strength : 3100 kg
 ** Length of operating lever : 495 mm

Jockey J5 is available in two versions :

- with a **10 m** rope, **two anchoring slings** (2 m + 2 m)
- with a **20 m** rope, **two anchoring slings** (2 m + 2 m) and **a pulley-block** to double the unit's capacity.